

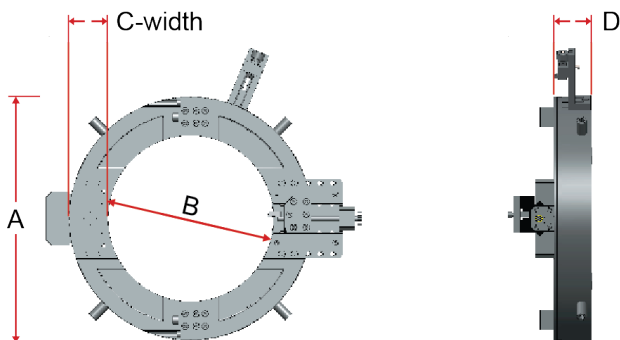
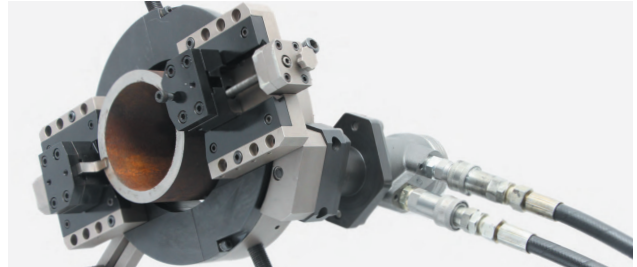
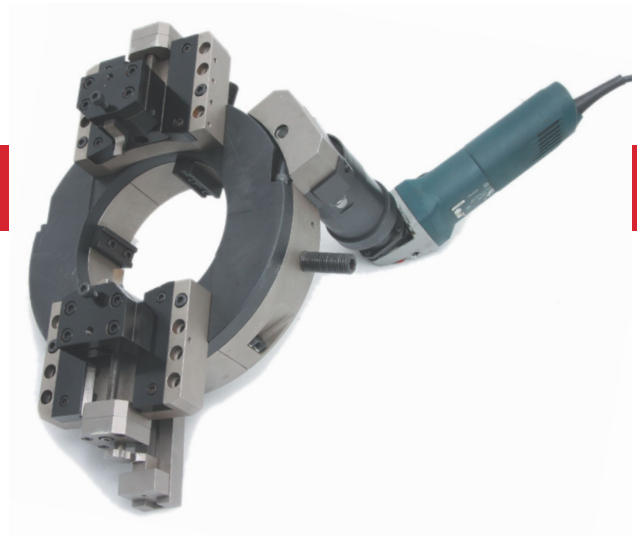
SFM-26

TUBE / PIPE BEVELLING AND CUTTING SPLIT FRAME MACHINE

Externally mounted SFM-26 is a split frame, clamshell type light and portable design. A rugged and slim machine suitable for tubes and pipes in the **size range of 50.8mm OD to 152.4mm OD (2" - 6")**. It is a new generation heavy duty facing, beveling and cutting machine designed for the Piping Industry.

FEATURES

- **SPLIT FRAME MACHINE** - It consists of a split mobile ring and fixed ring. Light weight, slim design.
- **JAWS** - Wedge style hardened tool steel jaws for maximum life and secure positioning. 8 points of contact locking system. It provides stability and avoids vibration.
- **TRIP ASSEMBLY** - It gives an auto feed to the tool bit assembly. Trip can be engaged or disengaged depending on feed required.
- **TOOL SLIDE** - Holds the cutting tool bit assembly tightly at the desired position for the cutting and beveling operation. Its robust construction and support to the cutting bits ensures vibration free performance.
- **PLANETARY GEAR BOX** - It gives a high speed reduction with increasing torque.



Dimensions (mm)	Pneumatic	Electric	Hydraulic
A	304	304	304
B	178	178	178
C	64	64	64
D	78	78	78

Drive		Pneumatic	Electric	Hydraulic
Locking Range	mm (inch)	50.8 - 152.4 (2" - 6")		
Idle Speed	rpm	34	37	
Pneumatic Power	HP	4	1.5	
Air Consumption	cfm	95	-	
Air Pressure	bar (psi)	6.2 (90)	-	
Electric Power	Watts	-	1100	
Voltage	V	-	230	
Net Weight	kg (lb)	32 (70.5)	28 (62)	
Shipping Weight	kg (lb)	-	-	